



EXERCISE: planning

- You have a position from an U14 chess game

READY

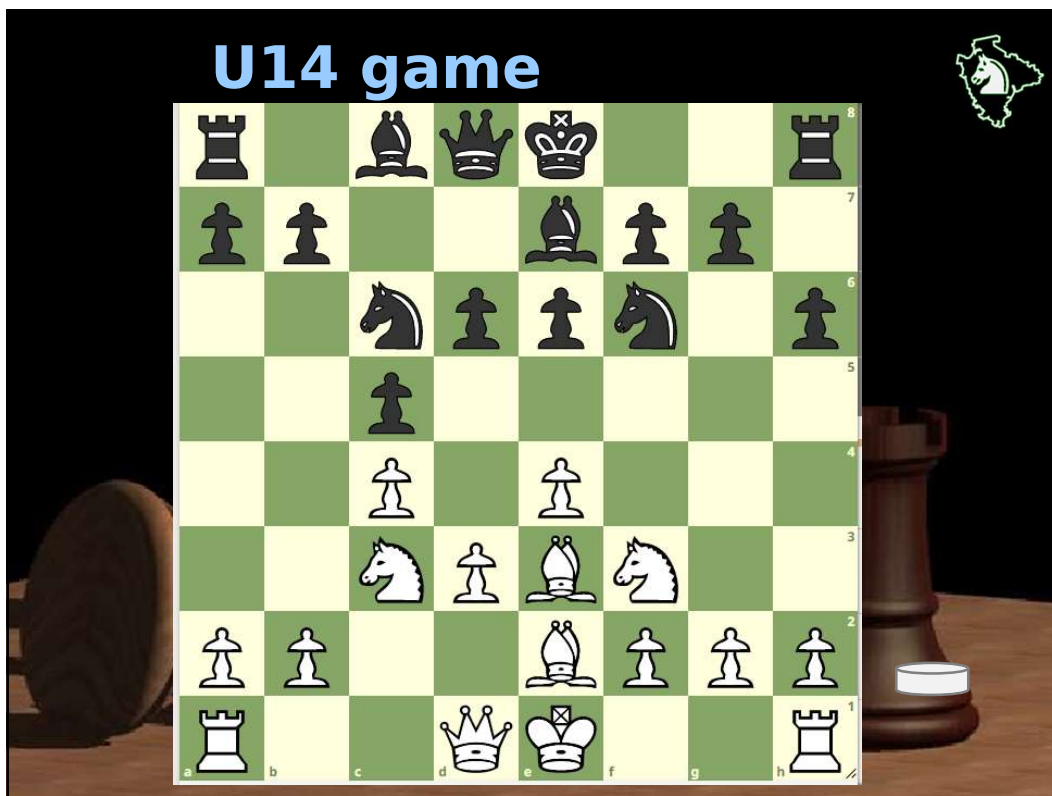
- What's going on?
- Listen to the pieces

AIM

- Come up with a plan
- Come up with a move that helps with your plan
- Choose a move
- Check it!

FIRE

- MOVE



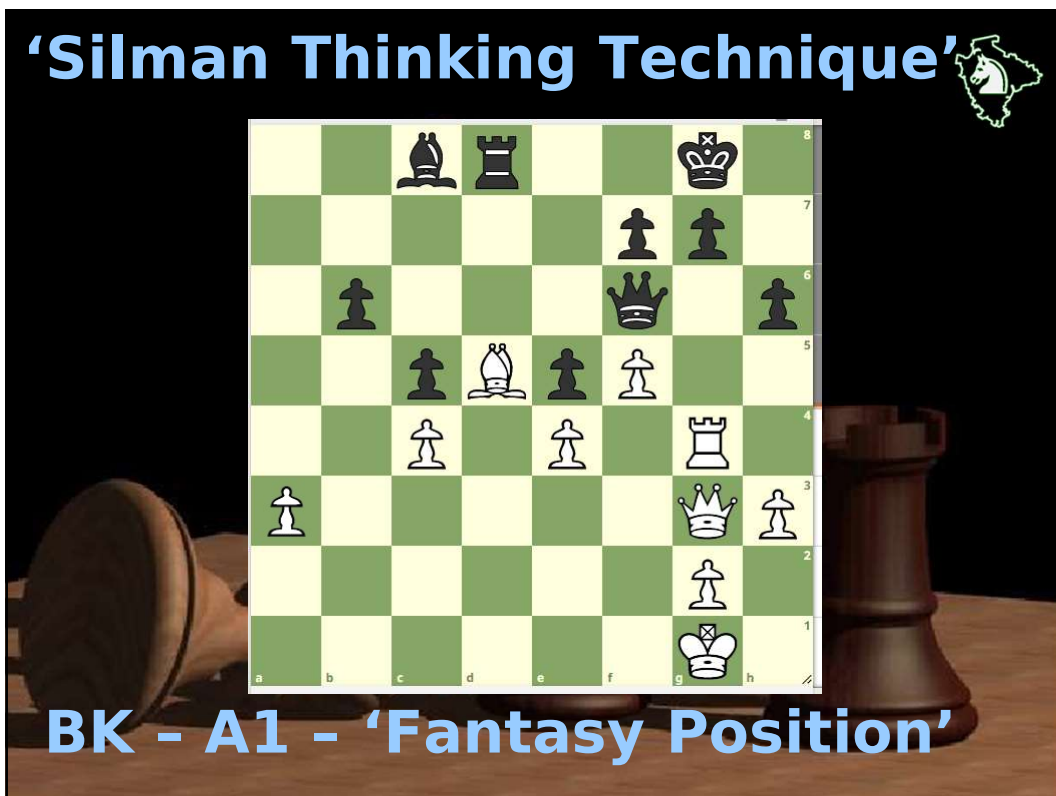
EXERCISE: U18

- You have a position from a master chess game
- What's going on?
- Assess position - key features (KWPFLC) & evaluation
- Come up with plans that fit your assessment
- Come up with moves that help with your plans
- Choose a plan and a move
- Check it!

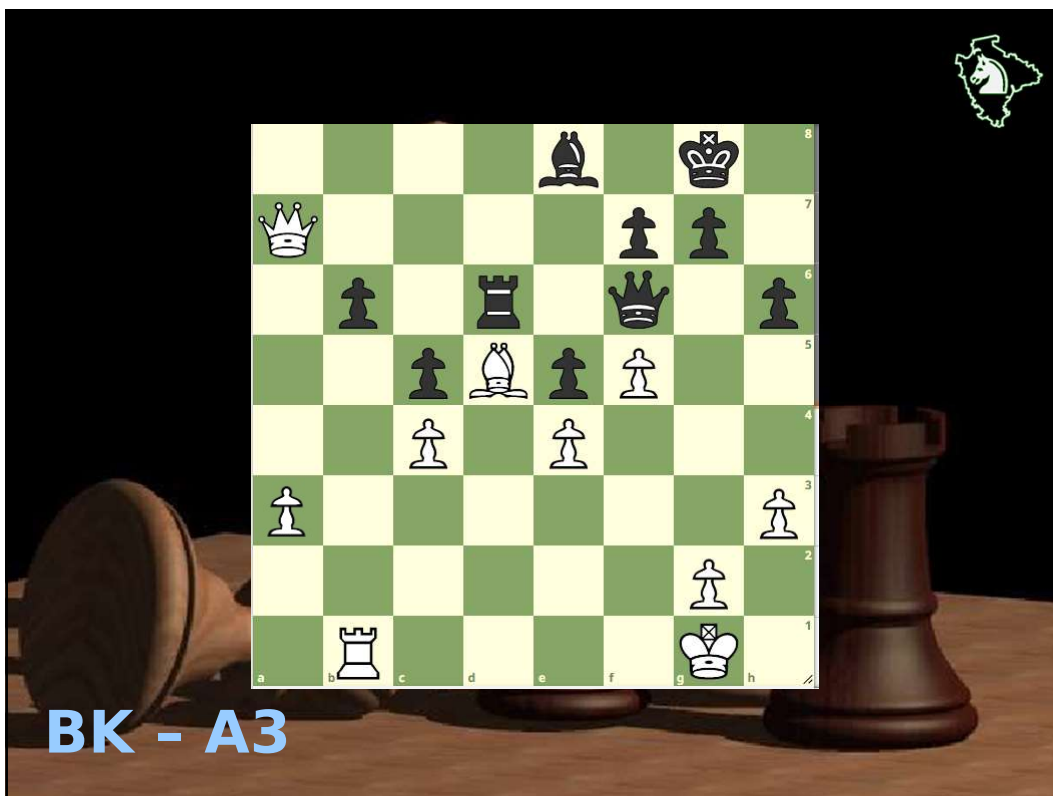
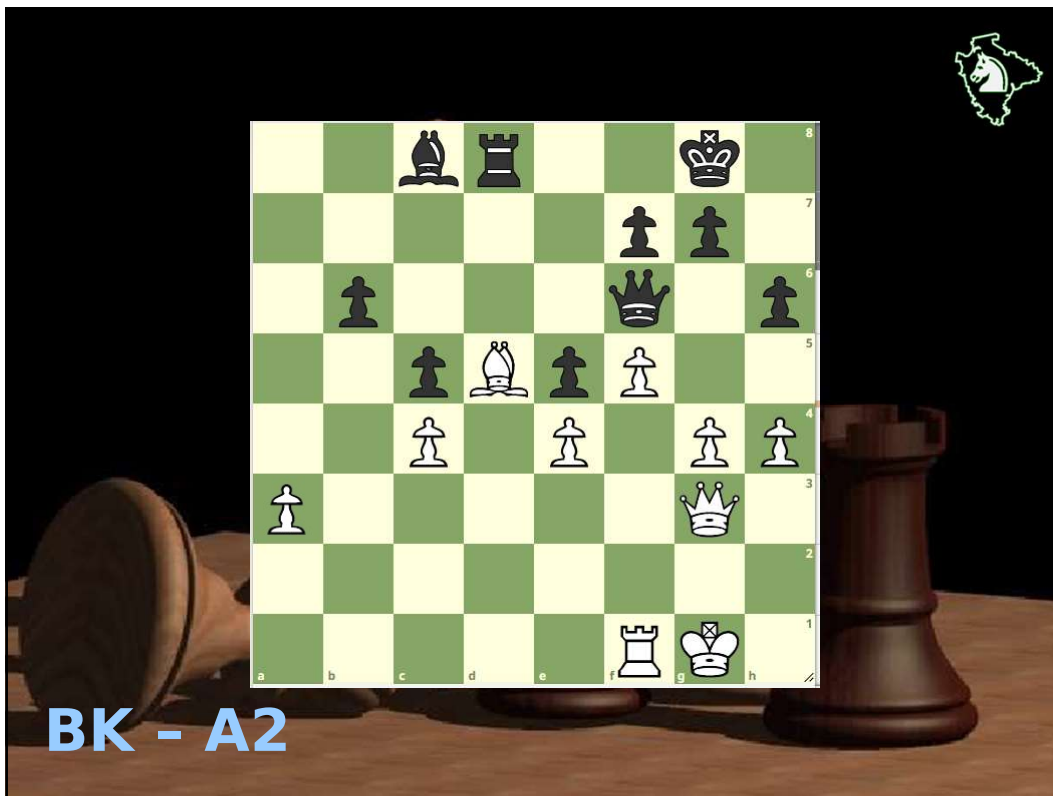
Botvinnik-Kan 1939



'Silman Thinking Technique'



BK - A1 - 'Fantasy Position'





Schematic thinking 1

"Recently, I was analysing an endgame with Steve Webb and at one point just pushed a bishop from b4 to d4, obliterating the chances of the Knight at a4 which can now only move to leave a lost K+P ending. Steve was briefly outraged, as I recall, so what made me do that? Well, you have to have seen the pattern before, but obviously ...Bb4-d4 is not a legal move. The point is that thinking in this way stops you getting bogged down in move orders, and focuses your attention on what must be done soon."

Schematic thinking 2



"Once in a lobby of the Hall of Columns of the Trade Union Centre in Moscow a group of masters were analysing an ending. They could not find the right way to go about things and there was a lot of arguing about it. Suddenly Capablanca came into the room. He was always fond of walking about when it was his opponent's turn to move. Learning the reason for the dispute the Cuban bent down to the position, said 'Si, si,' and suddenly redistributed the pieces all over the board to show what the correct formation was for the side trying to win. I haven't exaggerated. Don Jose literally pushed the

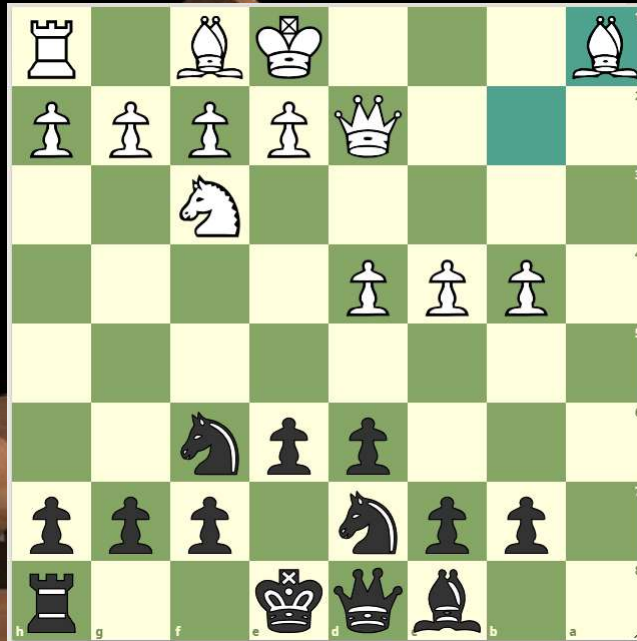
Schematic thinking 3



"White's plan is to prevent the advance of the enemy c-pawn which might make his own pawn at b2 weak, and to control the whole board as far as the fifth rank. This is achieved by playing the King to e3, the Rook to c3, the Knight to d4 and the pawns to b4 and f4. When this has been achieved White will advance his Q-side pawns" -- CAPABLANCA, Moscow 1936 Tournament Bulletin, quoted by KOTOV in *Play like a Grandmaster*, tr. Cafferty, pub. 1978 Batsford. ("Note - no variations!" KOTOV)



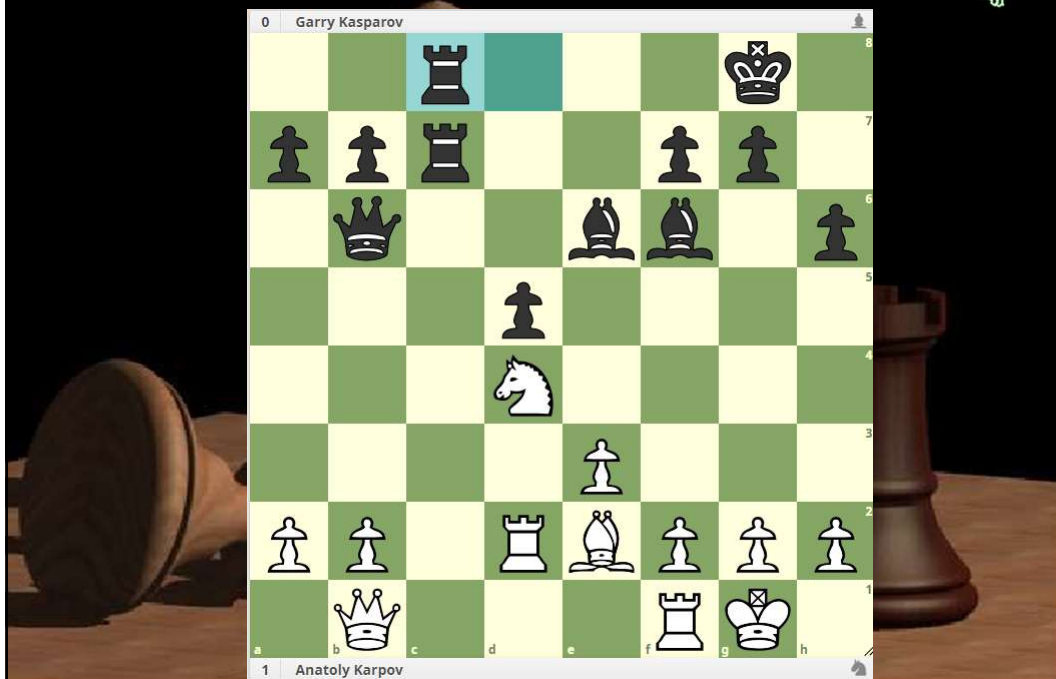
Schliperman-Yermolinsky



Spassky-Fischer



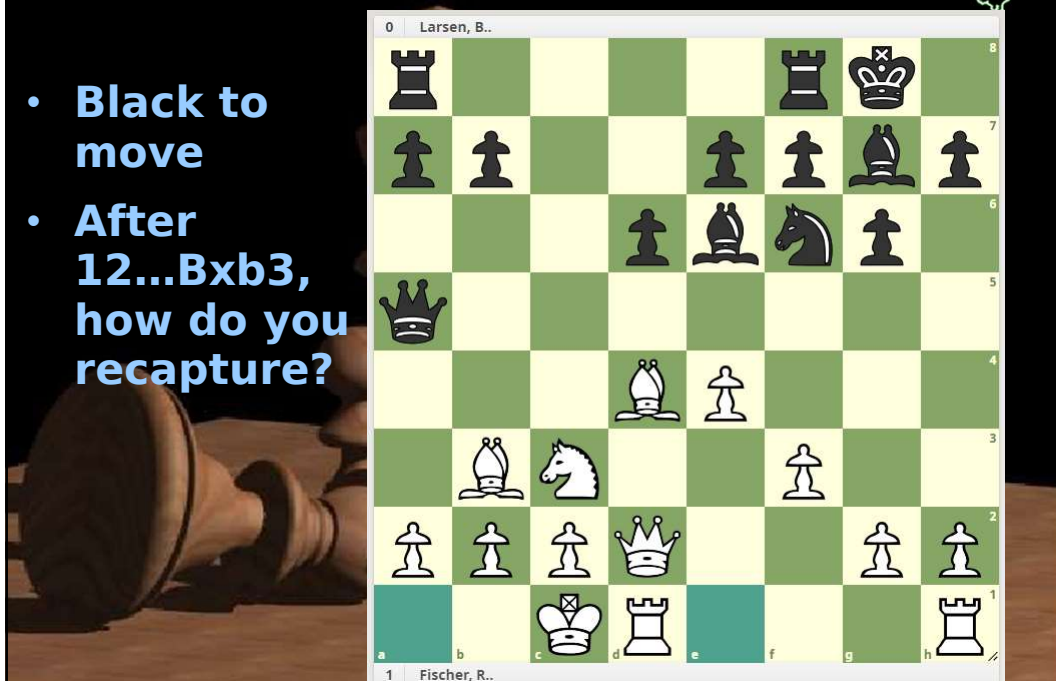
Karpov-Kasparov (1985#4)



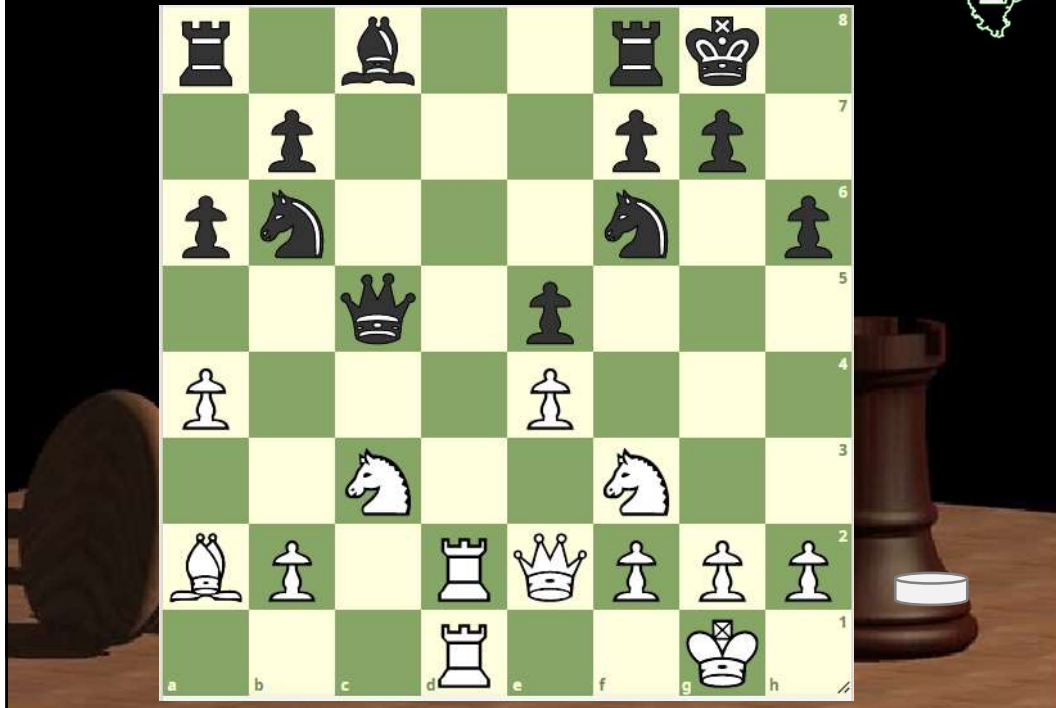
Fischer-Larsen



- **Black to move**
- **After 12...Bxb3, how do you recapture?**



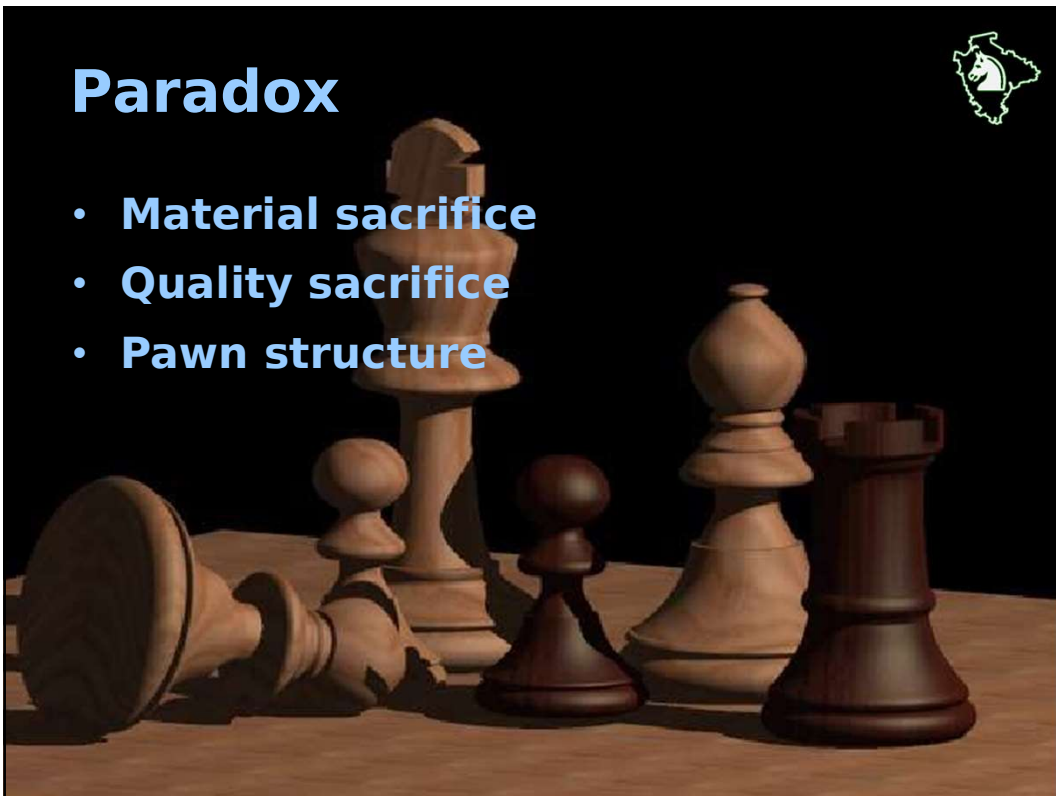
Botvinnik-Sorokin 1931



Paradox



- **Material sacrifice**
- **Quality sacrifice**
- **Pawn structure**



NEXT STEPS: strategy



- **DUNNINGTON** Can you be a positional chess genius?
- **BRICARD** Positional Chess Exercises
- **WATSON** Secrets of Modern Chess Strategy
- **AAGAARD** Positional play
- **SILMAN** Positional chess courses on [chess.com](https://www.chess.com)